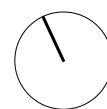
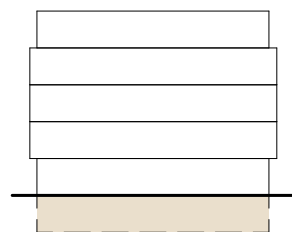
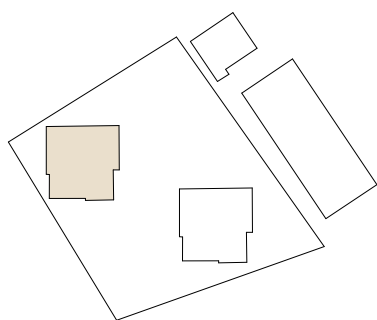
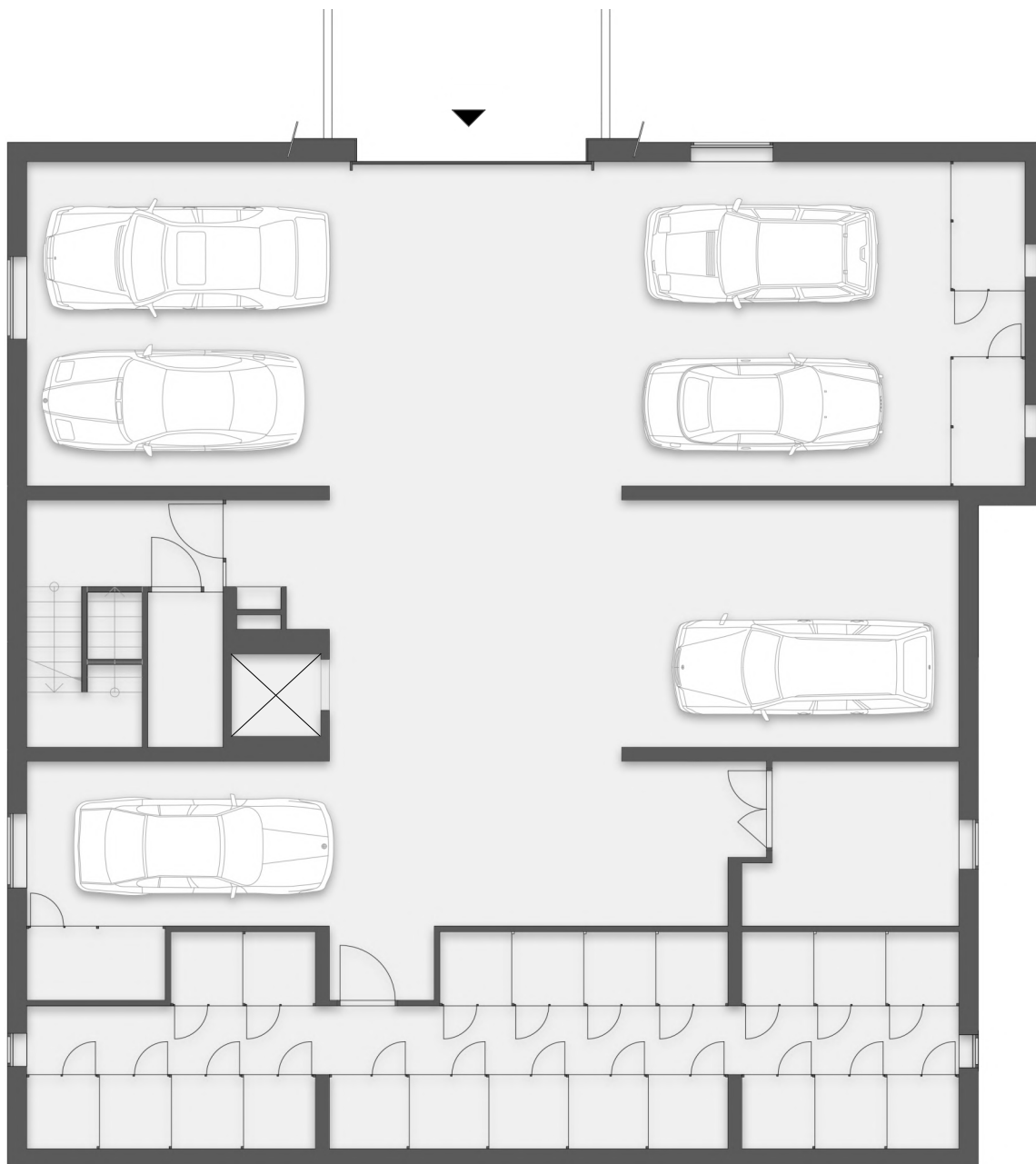


DREAMPARK GALANTA - PONUKA BYTOV

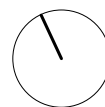
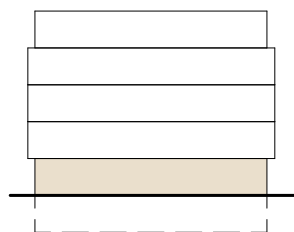
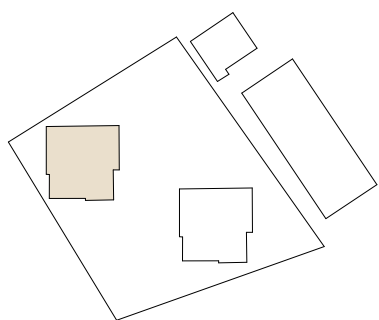
Bytový dom - B



Pôdorys suterénu



Pôdorys 1.nadzemného podlažia



1.1 - 2-IZBOVÝ BYT (BEZBARIÉROVÝ)

PODLAŽIE 1
POČET IZIEB 2

PLOCHA BYTU 39,48 m²

1.1.01 - Denná časť 21,91 m²

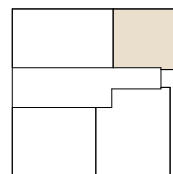
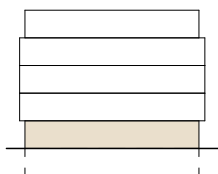
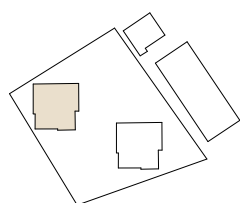
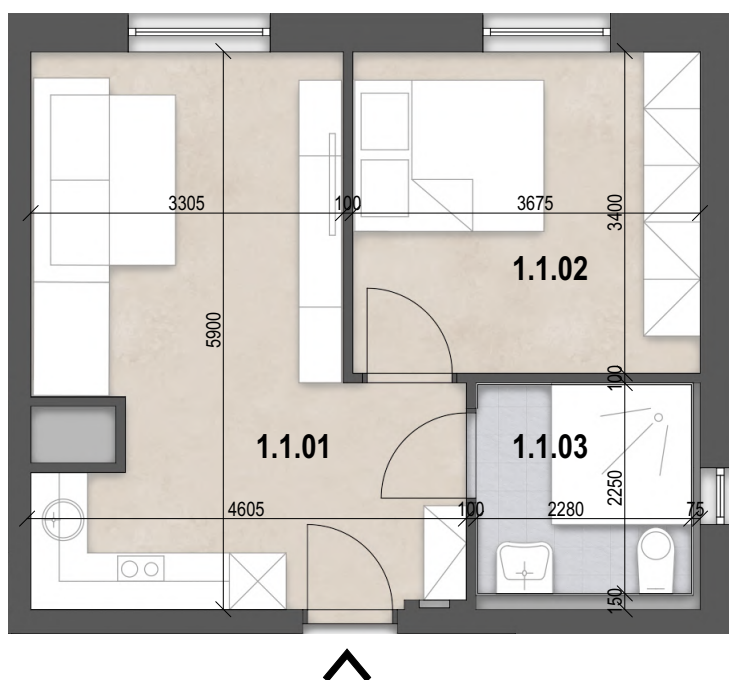
1.1.02 - Nočná časť 12,49 m²

1.1.03 - Kúpeľňa 5,08 m²

EXTERIÉR 1,78 m²

01.1.11 - Kobka 1,78 m²

PREDAJNÁ PLOCHA BYTU (BYT + EXTERIÉR) 41,26 m²



1.3 - 3-IZBOVÝ BYT

PODLAŽIE

1

POČET IZIEB

3

PLOCHA BYTU

58,22 m²

1.3.01 - Chodba

4,31 m²

1.3.02 - WC

1,22 m²

1.3.03 - Obyvacia izba

23,14 m²

1.3.04 - Izba

10,27 m²

1.3.05 - Spálňa

14,40 m²

1.3.06 - Kúpeľňa

4,88 m²

EXTERIÉR

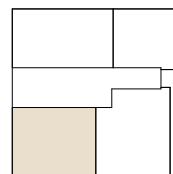
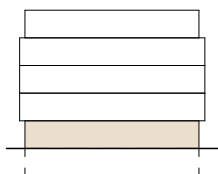
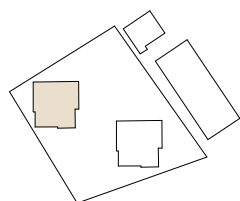
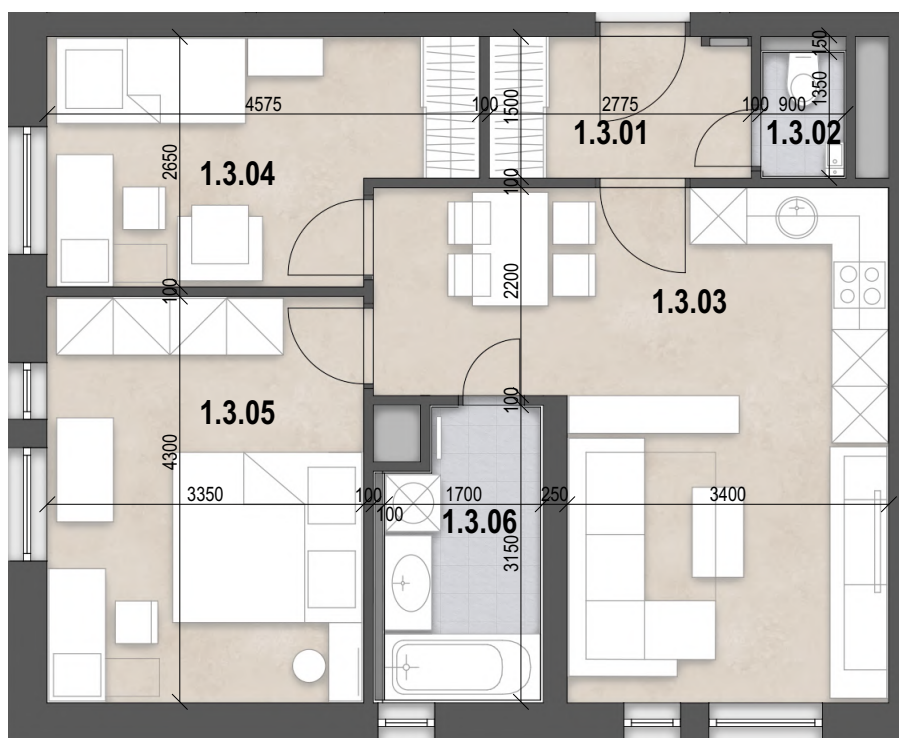
1,78 m²

01.1.13 - Kobka

1,78 m²

PREDAJNÁ PLOCHA BYTU (BYT + EXTERIÉR)

60,00 m²



1.4 - 2-IZBOVÝ BYT

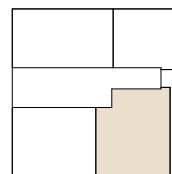
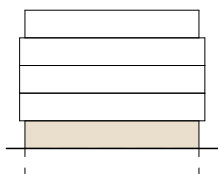
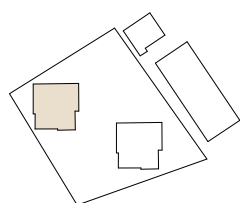
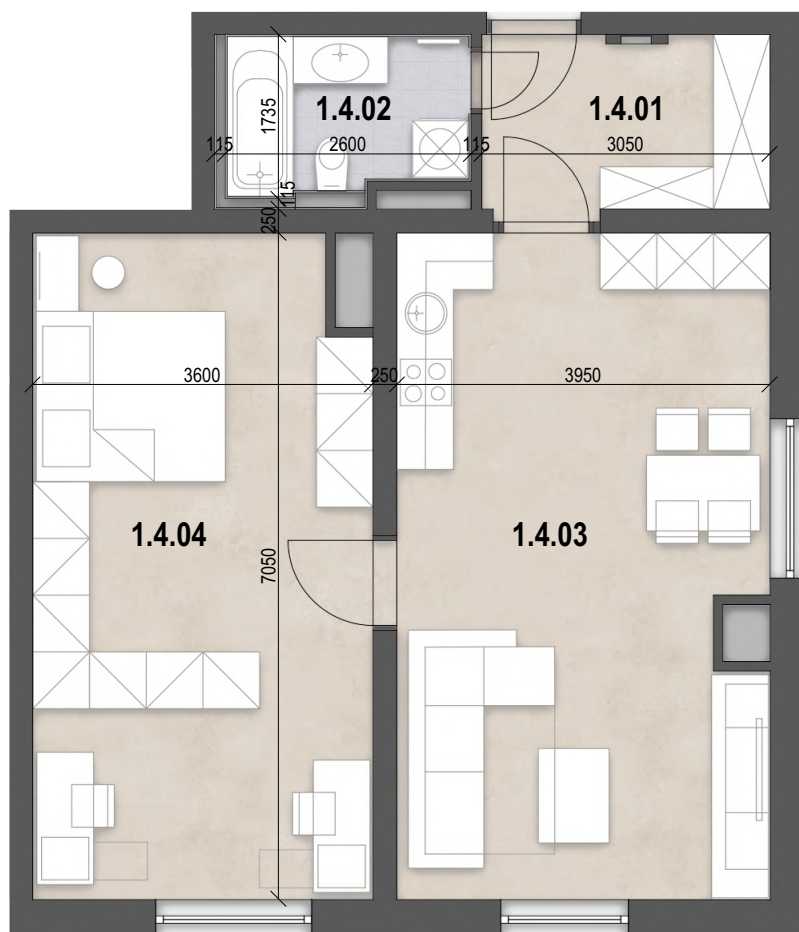
PODLAŽIE 1
POČET IZIEB 2

PLOCHA BYTU 62,79 m²

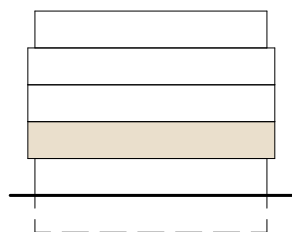
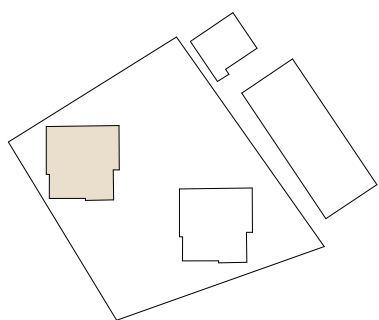
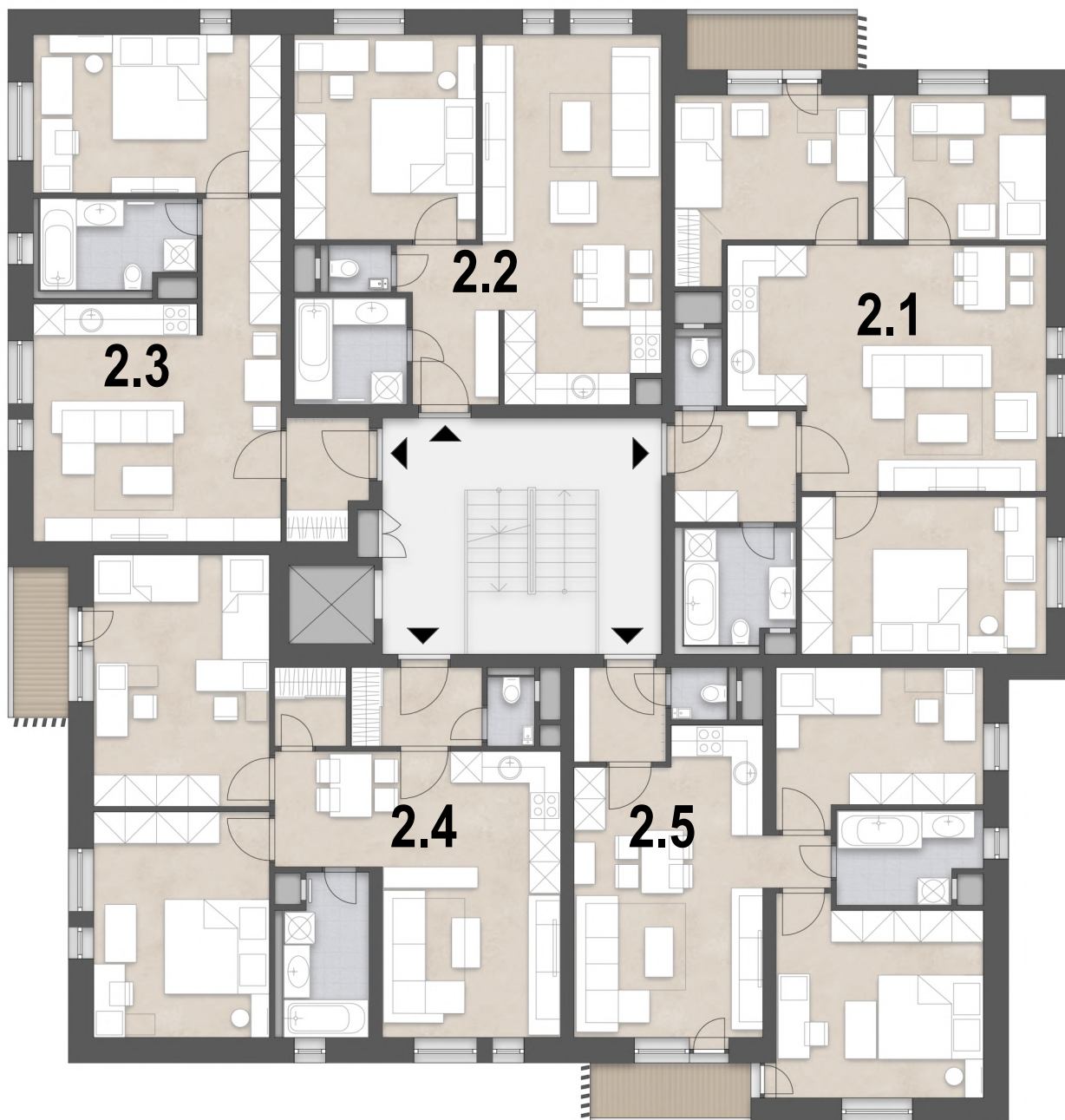
1.4.01 - Chodba 5,64 m²
1.4.02 - Kúpeľňa s WC 4,69 m²
1.4.03 - Obývacia izba + kuchyňa 27,63 m²
1.4.03 - Spálňa 24,83 m²

EXTERIÉR 1,78 m²
01.1.14 - Kobka 1,78 m²

PREDAJNÁ PLOCHA BYTU (BYT + EXTERIÉR) 64,57 m²



Pôdorys 2.nadzemného podlažia



2.1 - 4-IZBOVÝ BYT S KUCHYNSKÝM KÚTOM

PODLAŽIE

2

POČET IZIEB

4

PLOCHA BYTU

70,96 m²

2.1.01 - Predsieň

4,90 m²

2.1.02 - Kúpeľňa

4,66 m²

2.1.03 - Spáľňa

13,99 m²

2.1.04 - Obyvacia izba + KK

26,20 m²

2.1.05 - Izba

9,05 m²

2.1.06 - Izba

10,97 m²

2.1.07 - WC

1,19 m²

EXTERIÉR

5,19 m²

2.1.08 - Loggia

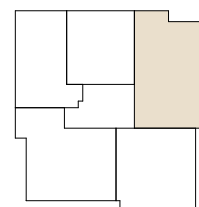
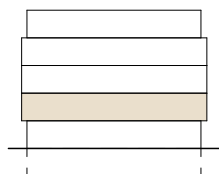
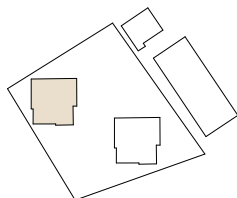
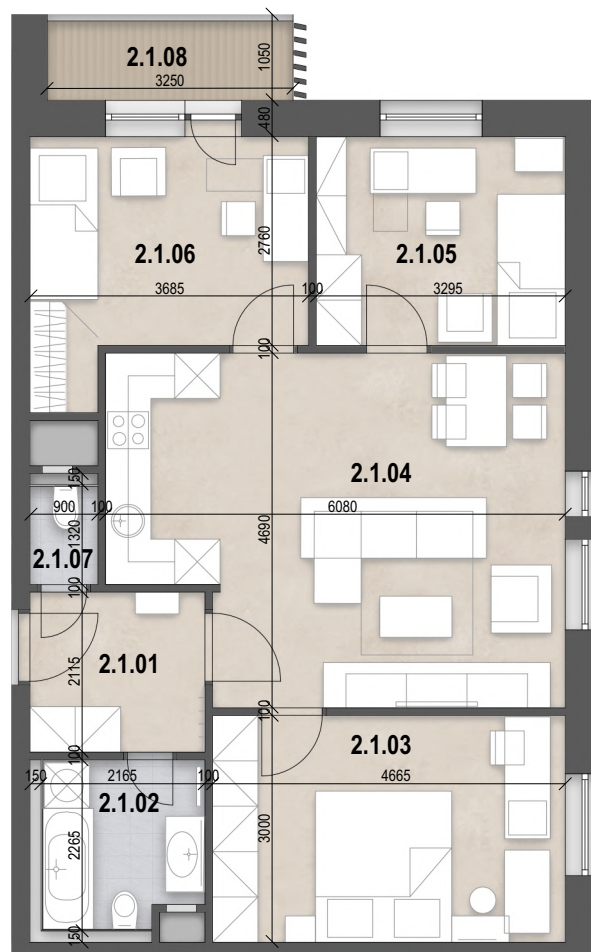
3,41 m²

01.1.15 - Kobka

1,78 m²

PREDAJNÁ PLOCHA BYTU (BYT + EXTERIÉR)

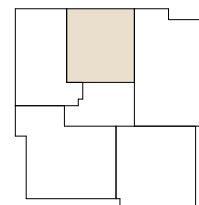
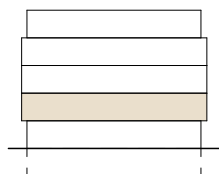
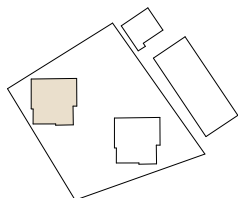
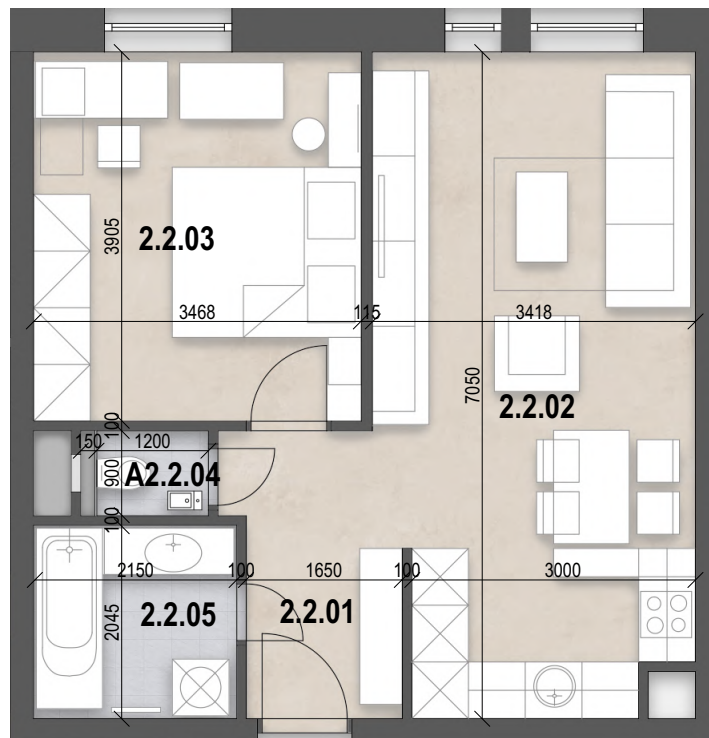
76,15 m²



2.2 - 2-IZBOVÝ BYT S KUCHYNSKÝM KÚTOM

PODLAŽIE 2
POČET IZIEB 2

PLOCHA BYTU	46,54 m²
2.2.01 - Predsieň	5,23 m ²
2.2.02 - Obyvacia izba + KK	22,60 m ²
2.2.03 - Izba	13,54 m ²
2.2.04 - WC	1,08 m ²
2.2.05 - Kúpeľňa	4,09 m ²
EXTERIÉR	1,78 m²
01.1.16 - Kobka	1,78 m ²
PREDAJNÁ PLOCHA BYTU (BYT + EXTERIÉR)	48,32 m²



2.3 - 2-IZBOVÝ BYT S KUCHYNSKÝM KÚTOM

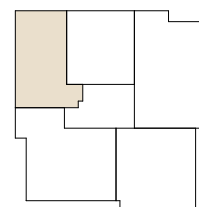
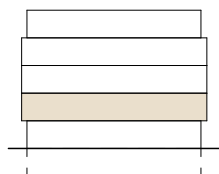
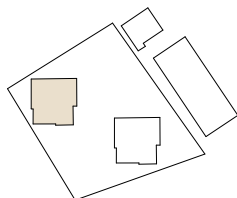
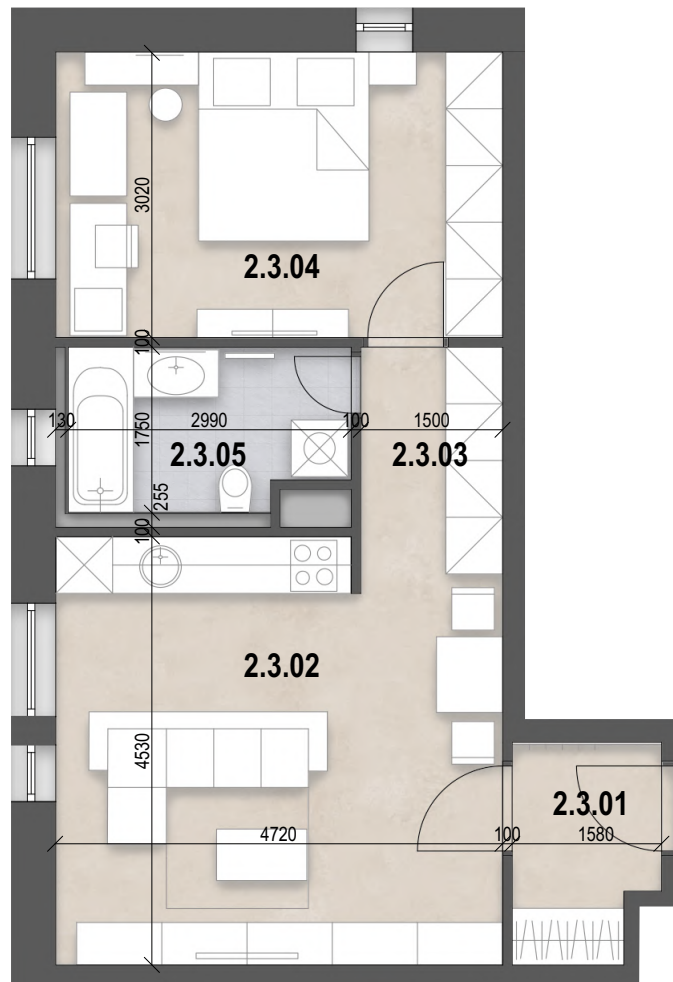
PODLAŽIE 2
POČET IZIEB 2

PLOCHA BYTU 47,06 m²

2.3.01 - Predsieň 3,41 m²
2.3.02 - Obývacia izba + kuchyňa 20,42 m²
2.3.03 - Chodba 3,91 m²
2.3.04 - Spálňa 14,26 m²
2.3.05 - Kúpeľňa s WC 5,06 m²

EXTERIÉR 1,78 m²
01.1.17 - Kobka 1,78 m²

PREDAJNÁ PLOCHA BYTU (BYT + EXTERIÉR) 48,84 m²



2.5 - 3-IZBOVÝ BYT S KUCHYNSKÝM KÚTOM

PODLAŽIE

2

POČET IZIEB

3

PLOCHA BYTU

55,61 m²

2.5.01 - Predsieň

3,15 m²

2.5.02 - WC

1,20 m²

2.5.03 - Obyvacia izba + KK

21,24 m²

2.5.04 - Izba

10,84 m²

2.5.05 - Kúpeľňa

4,73 m²

2.5.06 - Spálňa

14,45 m²

EXTERIÉR

4,99 m²

2.5.07 - Loggia

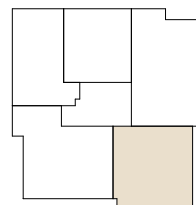
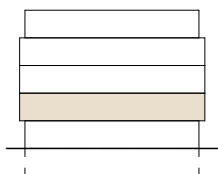
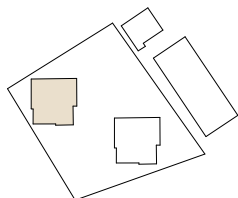
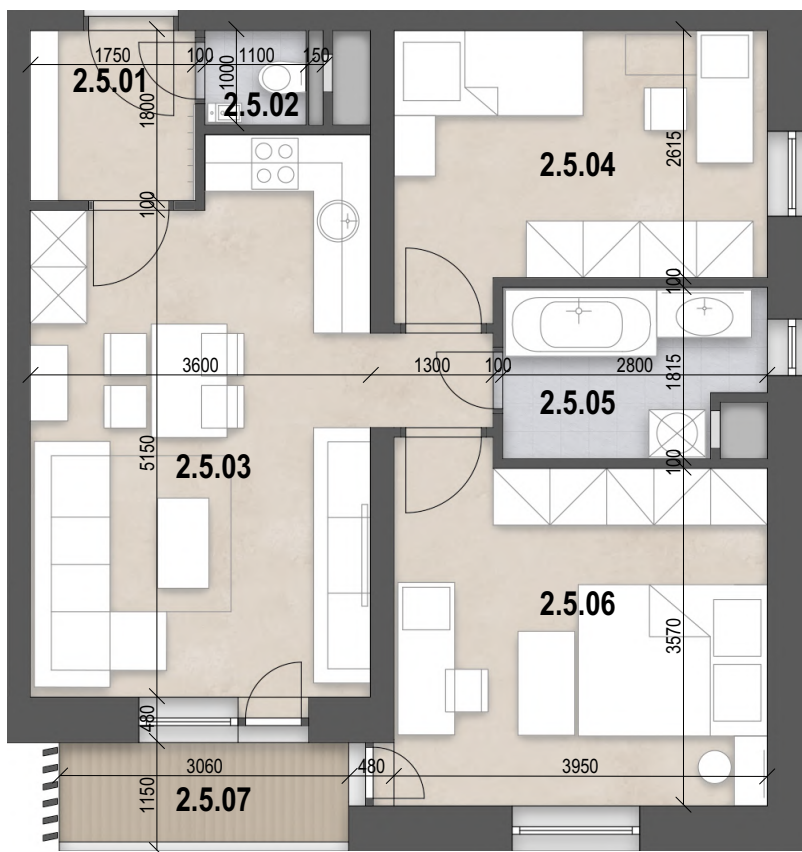
3,21 m²

01.1.19 - Kobka

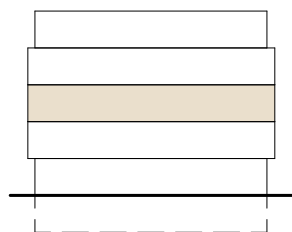
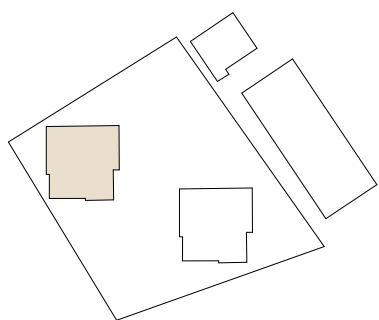
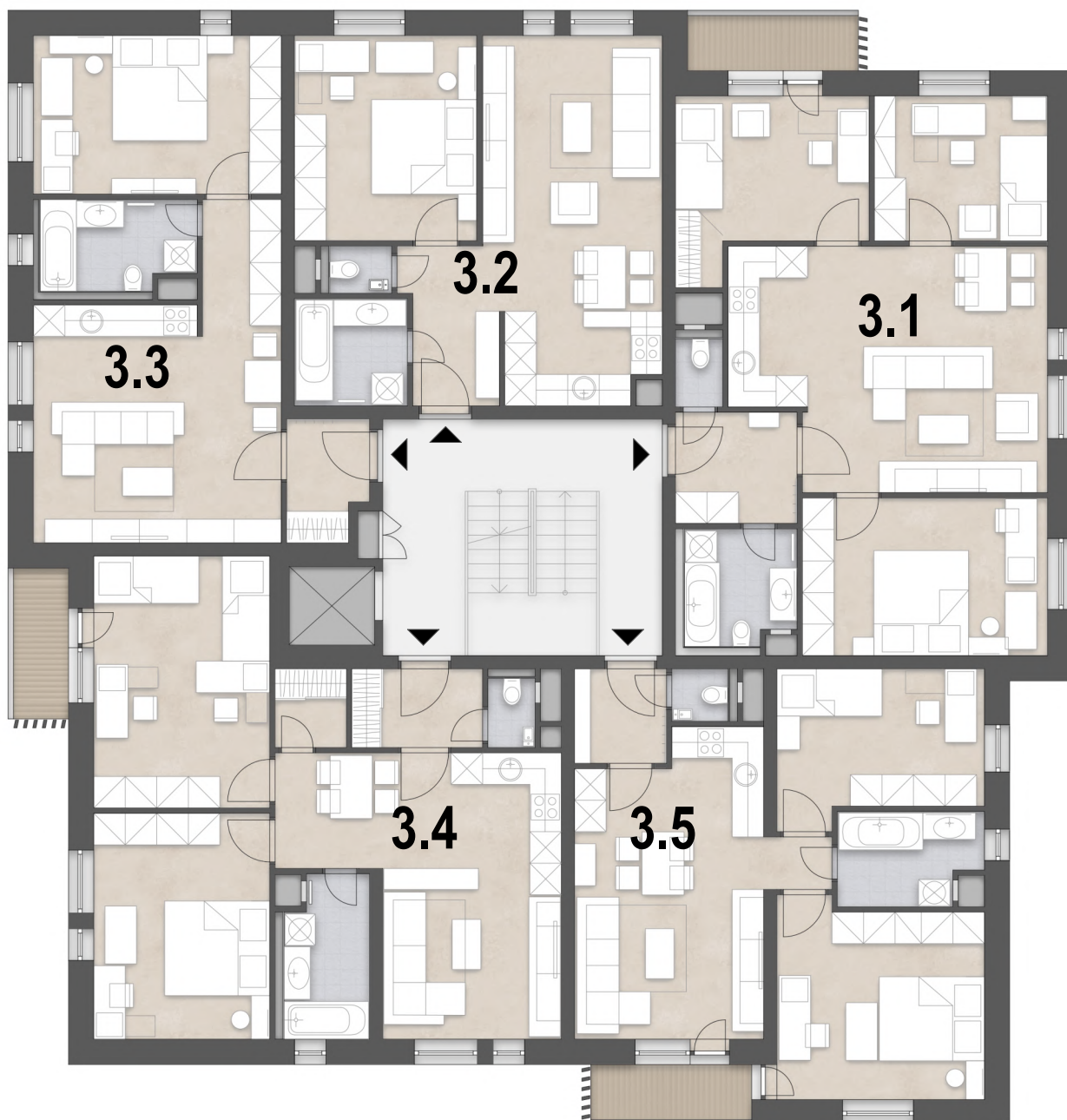
1,78 m²

PREDAJNÁ PLOCHA BYTU (BYT + EXTERIÉR)

60,60 m²



Pôdorys 3.nadzemného podlažia



3.1 - 4-IZBOVÝ BYT S KUCHYNSKÝM KÚTOM

PODLAŽIE

3

POČET IZIEB

4

PLOCHA BYTU

70,96 m²

3.1.01 - Predsieň

4,90 m²

3.1.02 - Kúpeľňa

4,66 m²

3.1.03 - Spáľňa

13,99 m²

3.1.04 - Obyvacia izba + KK

26,20 m²

3.1.05 - Izba

9,05 m²

3.1.06 - Izba

10,97 m²

3.1.07 - WC

1,19 m²

EXTERIÉR

5,19 m²

3.1.08 - Loggia

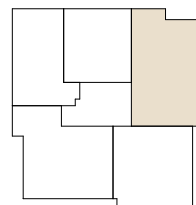
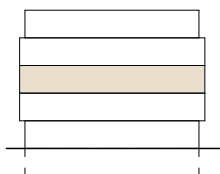
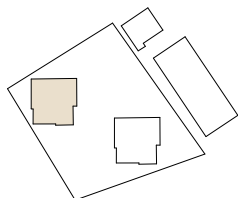
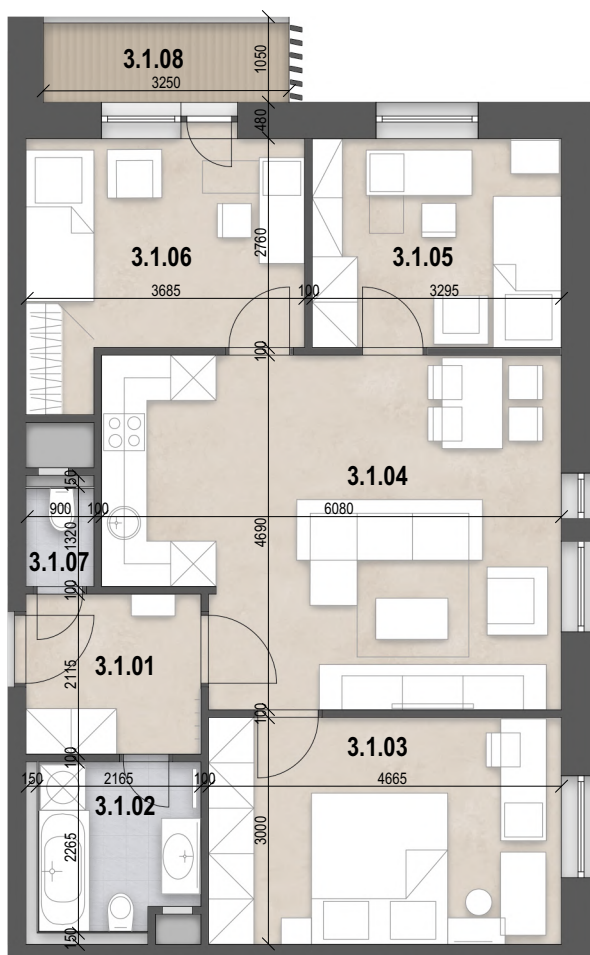
3,41 m²

01.1.20 - Kobka

1,78 m²

PREDAJNÁ PLOCHA BYTU (BYT + EXTERIÉR)

76,15 m²



3.2 - 2-IZBOVÝ BYT S KUCHYNSKÝM KÚTOM

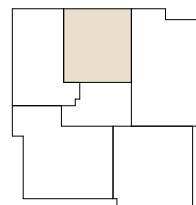
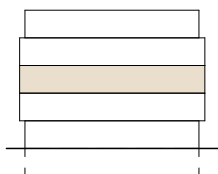
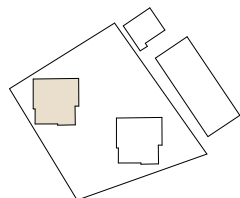
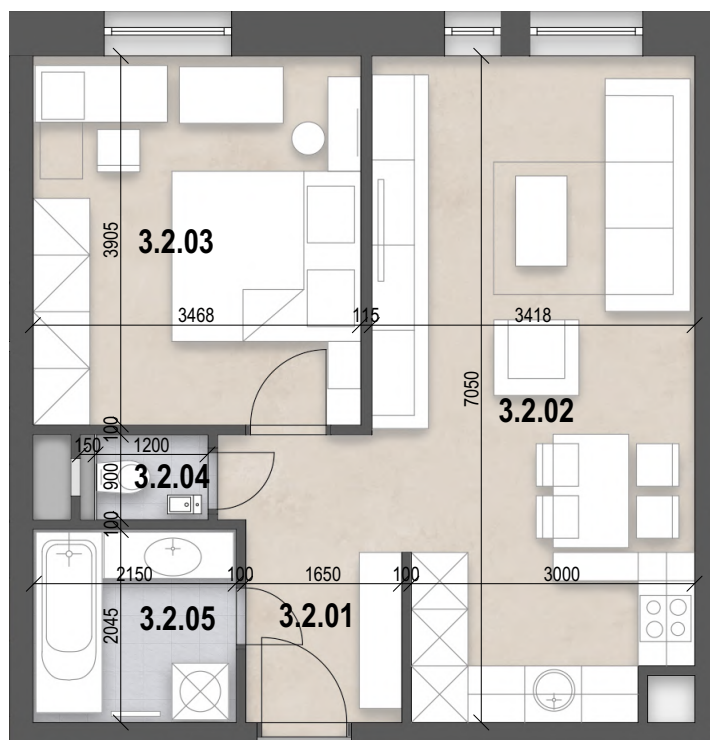
PODLAŽIE 3
POČET IZIEB 2

PLOCHA BYTU 46,54 m²

3.2.01 - Predsieň 5,23 m²
3.2.02 - Obývacia izba + kuchyňa 22,6 m²
3.2.03 - Izba 13,54 m²
3.2.04 - WC 1,08 m²
3.2.05 - Kúpeľňa 4,09 m²

EXTERIÉR 1,78 m²
01.1.21 - Kobka 1,78 m²

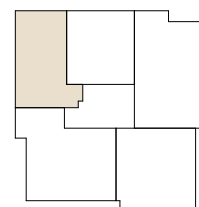
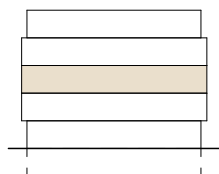
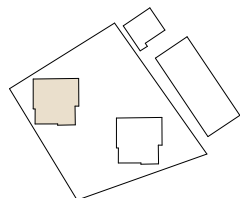
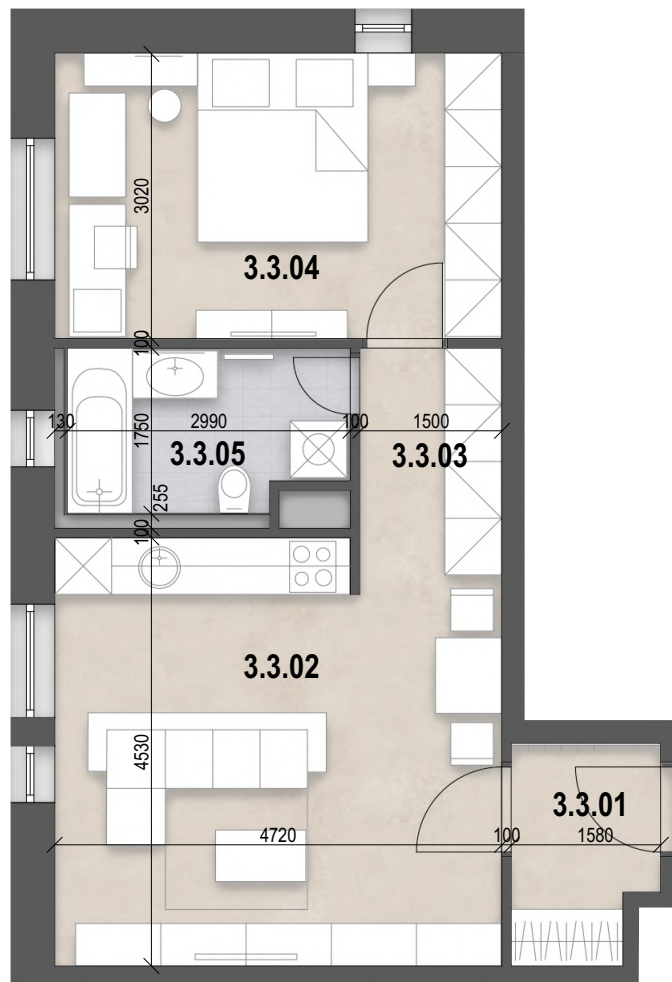
PREDAJNÁ PLOCHA BYTU (BYT + EXTERIÉR) 48,32 m²



3.3 - 2-IZBOVÝ BYT S KUCHYNSKÝM KÚTOM

PODLAŽIE 3
POČET IZIEB 2

PLOCHA BYTU	47,06 m²
3.3.01 - Predsieň	3,41 m ²
3.3.02 - Obývacia izba + kuchyňa	20,42 m ²
3.3.03 - Chodba	3,91 m ²
3.3.04 - Spálňa	14,26 m ²
3.3.05 - Kúpeľňa s WC	5,06 m ²
EXTERIÉR	1,78 m²
01.1.22 - Kobka	1,78 m ²
PREDAJNÁ PLOCHA BYTU (BYT + EXTERIÉR)	48,84 m²



3.4 - 3-IZBOVÝ BYT

PODLAŽIE

3

POČET IZIEB

3

PLOCHA BYTU

65,59 m²

3.4.01 - Predsieň

3,96 m²

3.4.02 - WC

1,22 m²

3.4.03 - Kuchyňa s jedálňou

11,99 m²

3.4.04 - Obyvacia izba

11,05 m²

3.4.05 - Kúpeľňa

4,87 m²

3.4.06 - Spálňa

14,40 m²

3.4.07 - Izba

16,06 m²

3.4.08 - Kumbál

2,04 m²

EXTERIÉR

4,79 m²

3.4.09 - Loggia

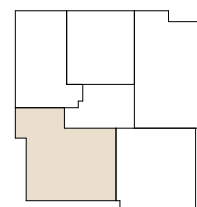
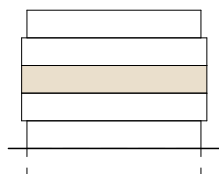
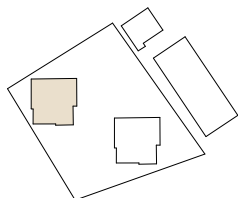
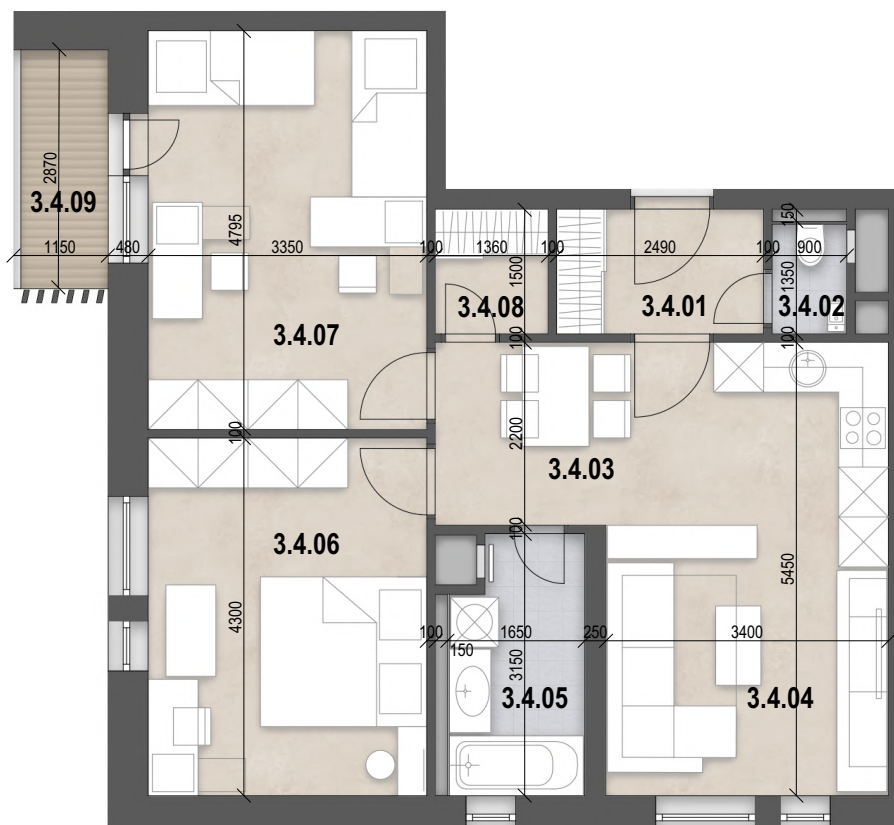
3,01 m²

01.1.23 - Kobka

1,78 m²

PREDAJNÁ PLOCHA BYTU (BYT + EXTERIÉR)

70,38 m²



3.5 - 3-IZBOVÝ BYT S KUCHYNSKÝM KÚTOM

PODLAŽIE

3

POČET IZIEB

3

PLOCHA BYTU

55,61 m²

3.5.01 - Predsieň

3,15 m²

3.5.02 - WC

1,20 m²

3.5.03 - Obyvacia izba + KK

21,24 m²

3.5.04 - Izba

10,84 m²

3.5.05 - Kúpeľňa

4,73 m²

3.5.06 - Spáľňa

14,45 m²

EXTERIÉR

4,99 m²

3.5.07 - Loggia

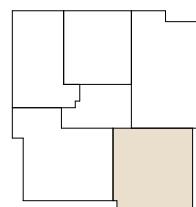
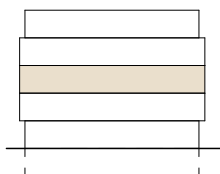
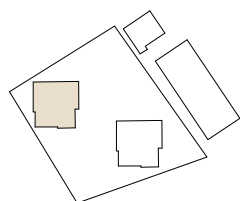
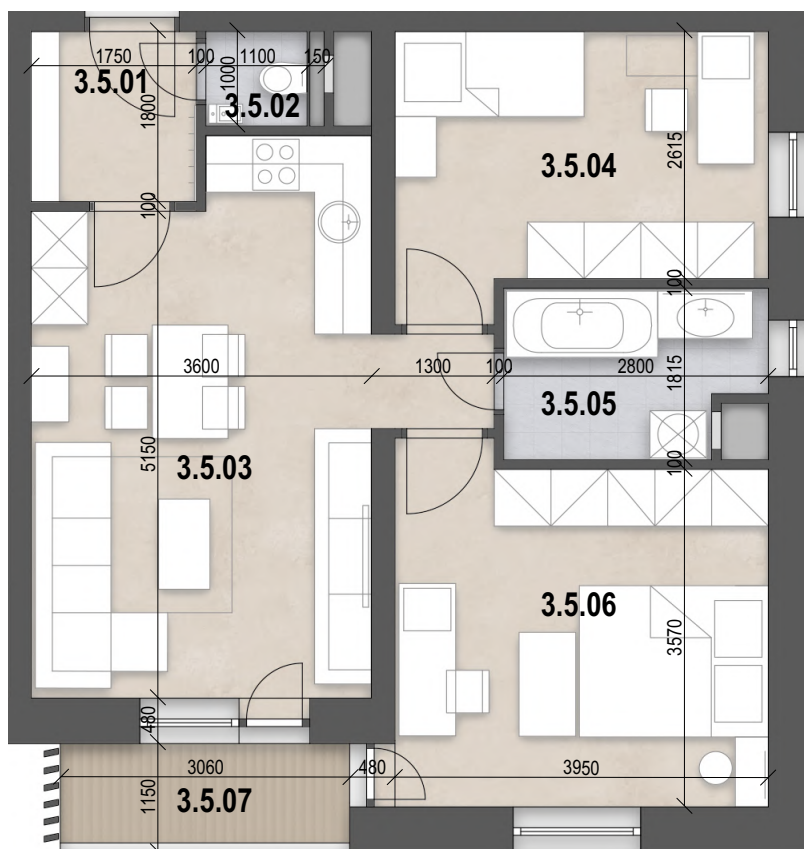
3,21 m²

01.1.24 - Kobka

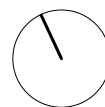
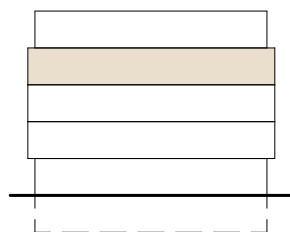
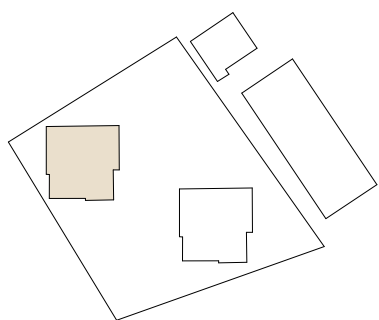
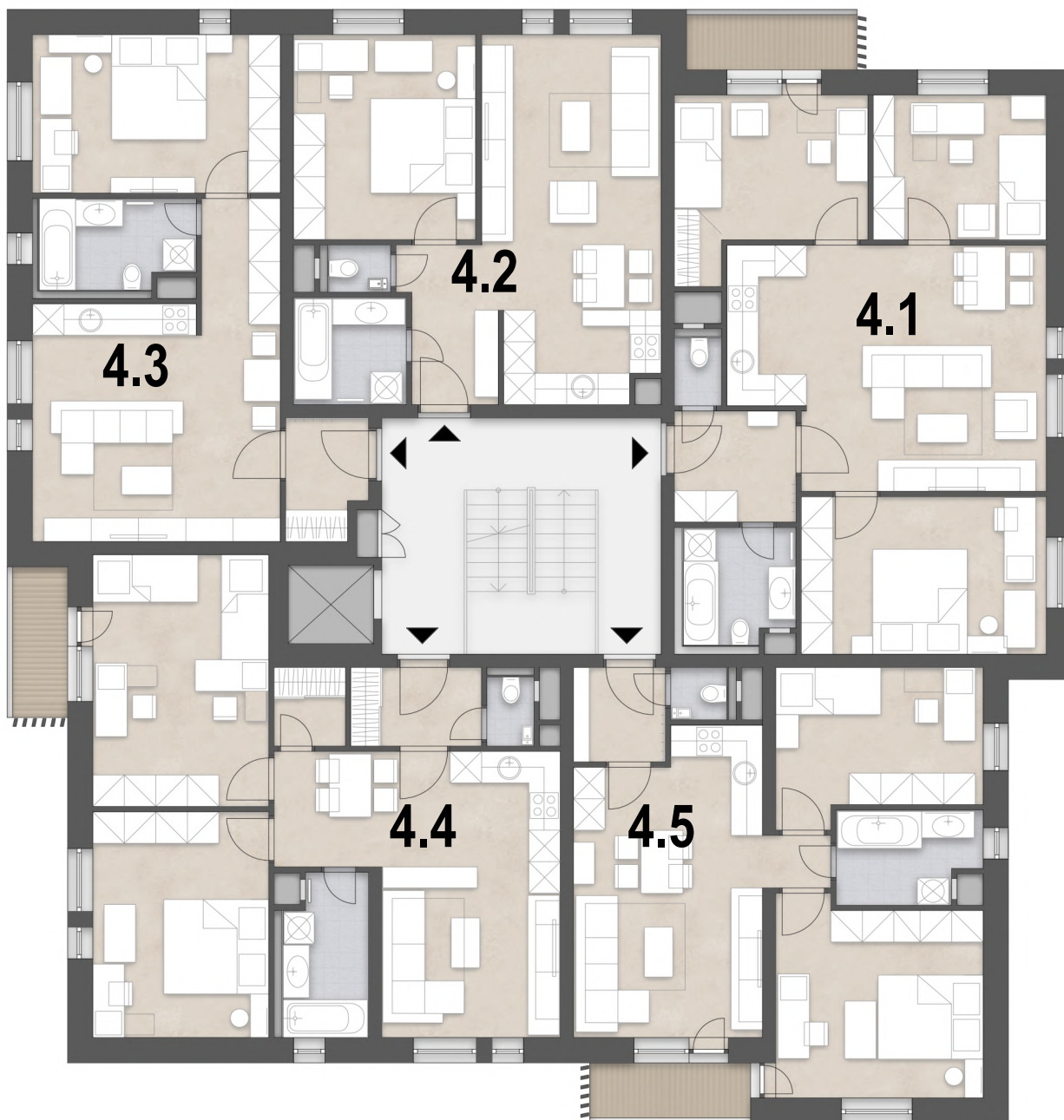
1,78 m²

PREDAJNÁ PLOCHA BYTU (BYT + EXTERIÉR)

60,60 m²



Pôdorys 4.nadzemného podlažia



4.1 - 4-IZBOVÝ BYT S KUCHYNSKÝM KÚTOM

PODLAŽIE

4

POČET IZIEB

4

PLOCHA BYTU

70,96 m²

4.1.01 - Predsieň

4,90 m²

4.1.02 - Kúpeľňa

4,66 m²

4.1.03 - Spáľňa

13,99 m²

4.1.04 - Obyvacia izba + KK

26,20 m²

4.1.05 - Izba

9,05 m²

4.1.06 - Izba

10,97 m²

4.1.07 - WC

1,19 m²

EXTERIÉR

5,19 m²

4.1.08 - Loggia

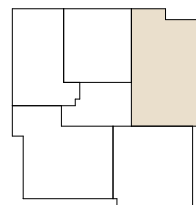
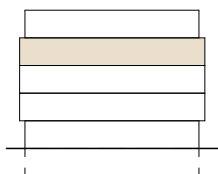
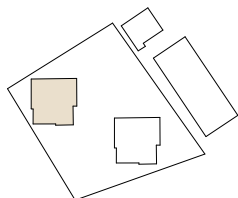
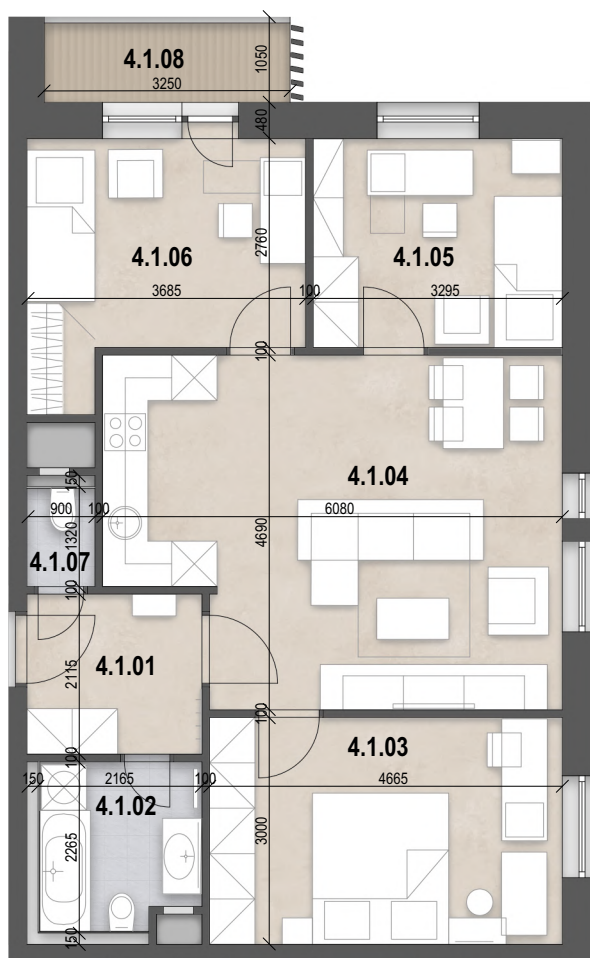
3,41 m²

01.1.25 - Kobka

1,78 m²

PREDAJNÁ PLOCHA BYTU (BYT + EXTERIÉR)

76,15 m²



4.2 - 2-IZBOVÝ BYT S KUCHYNSKÝM KÚTOM

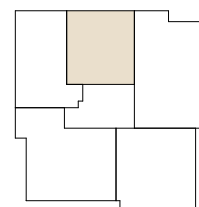
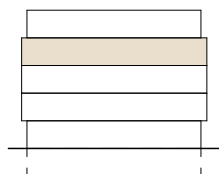
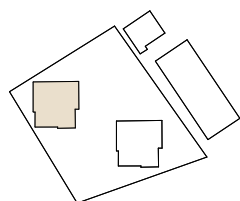
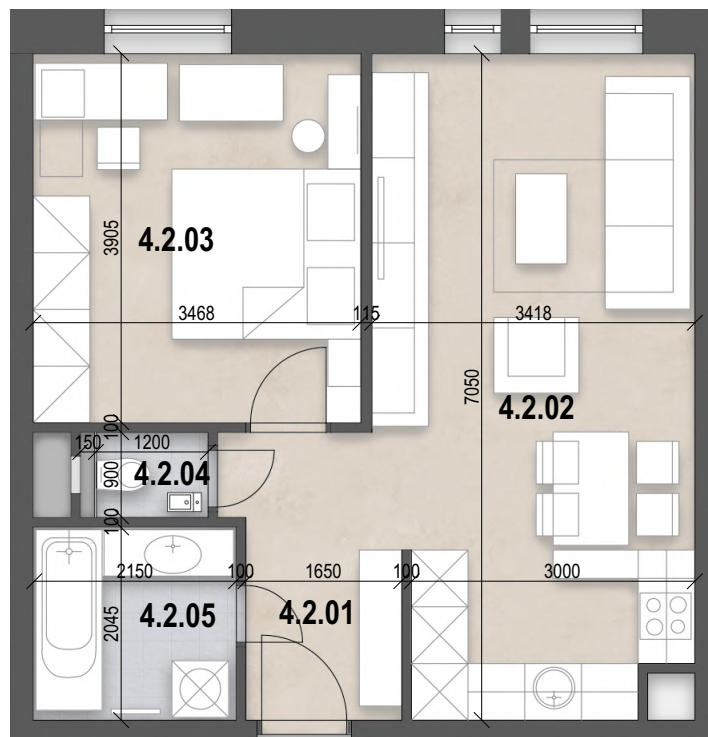
PODLAŽIE 4
POČET IZIEB 2

PLOCHA BYTU 46,54 m²

4.2.01 - Predsieň 5,23 m²
4.2.02 - Obývacia izba + kuchyňa 22,60 m²
4.2.03 - Izba 13,54 m²
4.2.04 - WC 1,08 m²
4.2.05 - Kúpeľňa 4,09 m²

EXTERIÉR 1,78 m²
01.1.26 - Kobka 1,78 m²

PREDAJNÁ PLOCHA BYTU (BYT + EXTERIÉR) 48,32 m²



4.3 - 2-IZBOVÝ BYT S KUCHYNSKÝM KÚTOM

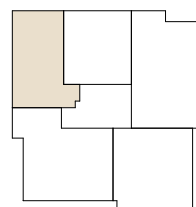
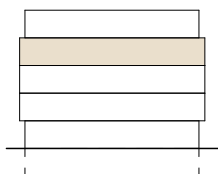
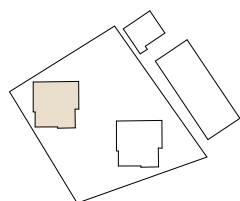
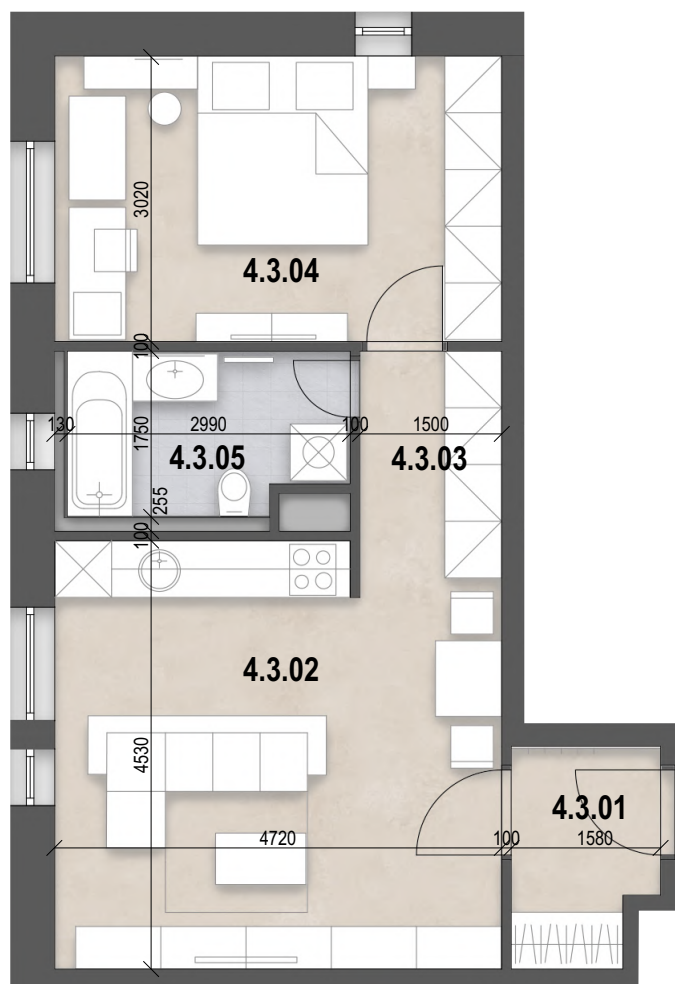
PODLAŽIE 4
POČET IZIEB 2

PLOCHA BYTU 47,06 m²

4.3.01 - Predsieň 3,41 m²
4.3.02 - Obývacia izba + kuchyňa 20,42 m²
4.3.03 - Chodba 3,91 m²
4.3.04 - Spálňa 14,26 m²
4.3.05 - Kúpeľňa s WC 5,06 m²

EXTERIÉR 1,78 m²
01.1.27 - Kobka 1,78 m²

PREDAJNÁ PLOCHA BYTU (BYT + EXTERIÉR) 48,84 m²



4.4 - 3-IZBOVÝ BYT

PODLAŽIE

4

POČET IZIEB

3

PLOCHA BYTU

65,59 m²

4.4.01 - Predsieň

3,96 m²

4.4.02 - WC

1,22 m²

4.4.03 - Kuchyňa s jedálňou

11,99 m²

4.4.04 - Obyvacia izba

11,05 m²

4.4.05 - Kúpeľňa

4,87 m²

4.4.06 - Spálňa

14,40 m²

4.4.07 - Izba

16,06 m²

4.4.08 - Kumbál

2,04 m²

EXTERIÉR

4,79 m²

4.4.09 - Loggia

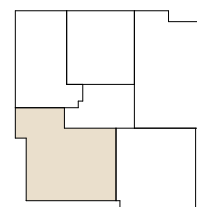
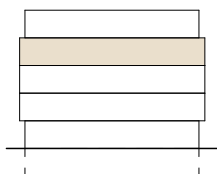
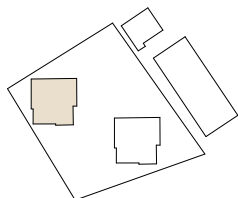
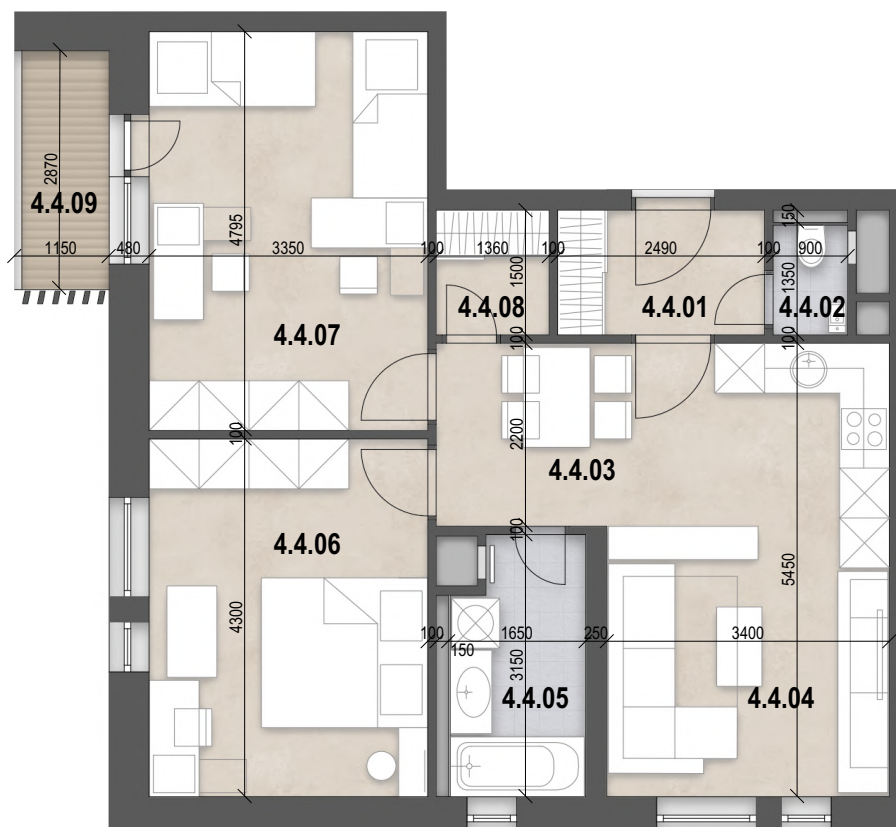
3,01 m²

01.1.28 - Kobka

1,78 m²

PREDAJNÁ PLOCHA BYTU (BYT + EXTERIÉR)

70,38 m²



4.5 - 3-IZBOVÝ BYT S KUCHYNSKÝM KÚTOM

PODLAŽIE

4

POČET IZIEB

3

PLOCHA BYTU

55,61 m²

4.5.01 - Predsieň

3,15 m²

4.5.02 - WC

1,20 m²

4.5.03 - Obyvacia izba + KK

21,24 m²

4.5.04 - Izba

10,84 m²

4.5.05 - Kúpeľňa

4,73 m²

4.5.06 - Spáľňa

14,45 m²

EXTERIÉR

4,99 m²

4.5.07 - Loggia

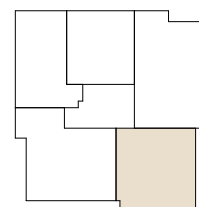
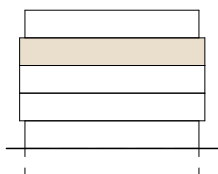
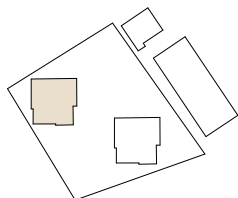
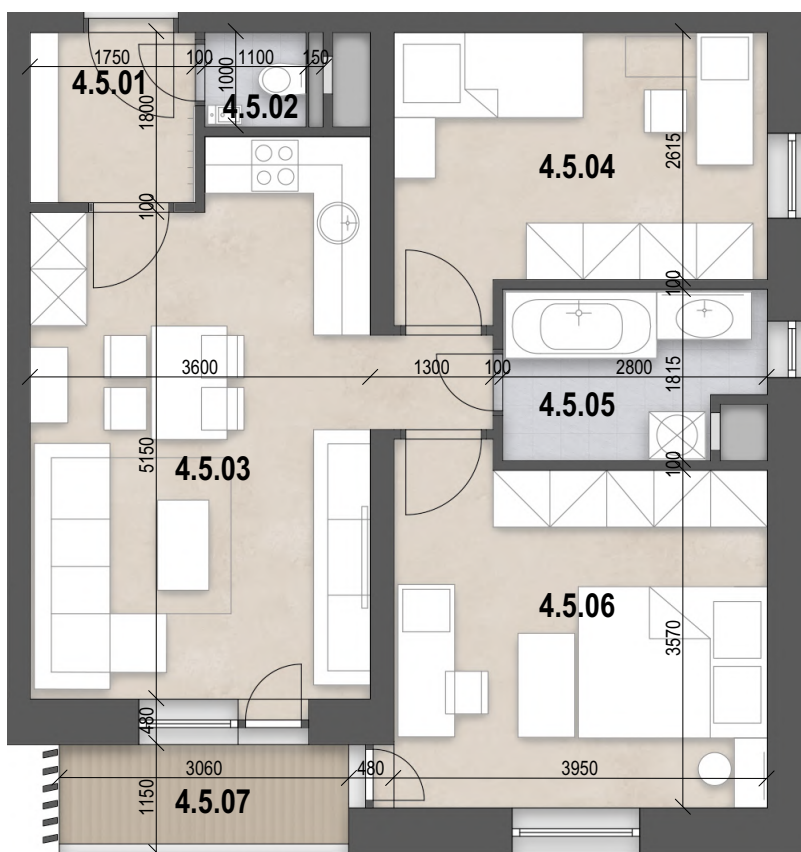
3,21 m²

01.1.29 - Kobka

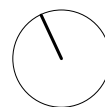
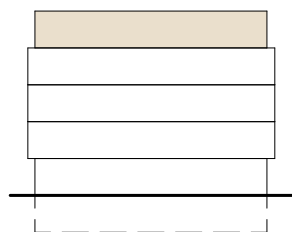
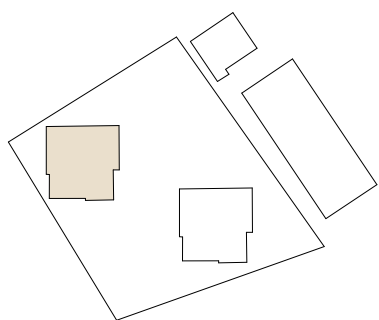
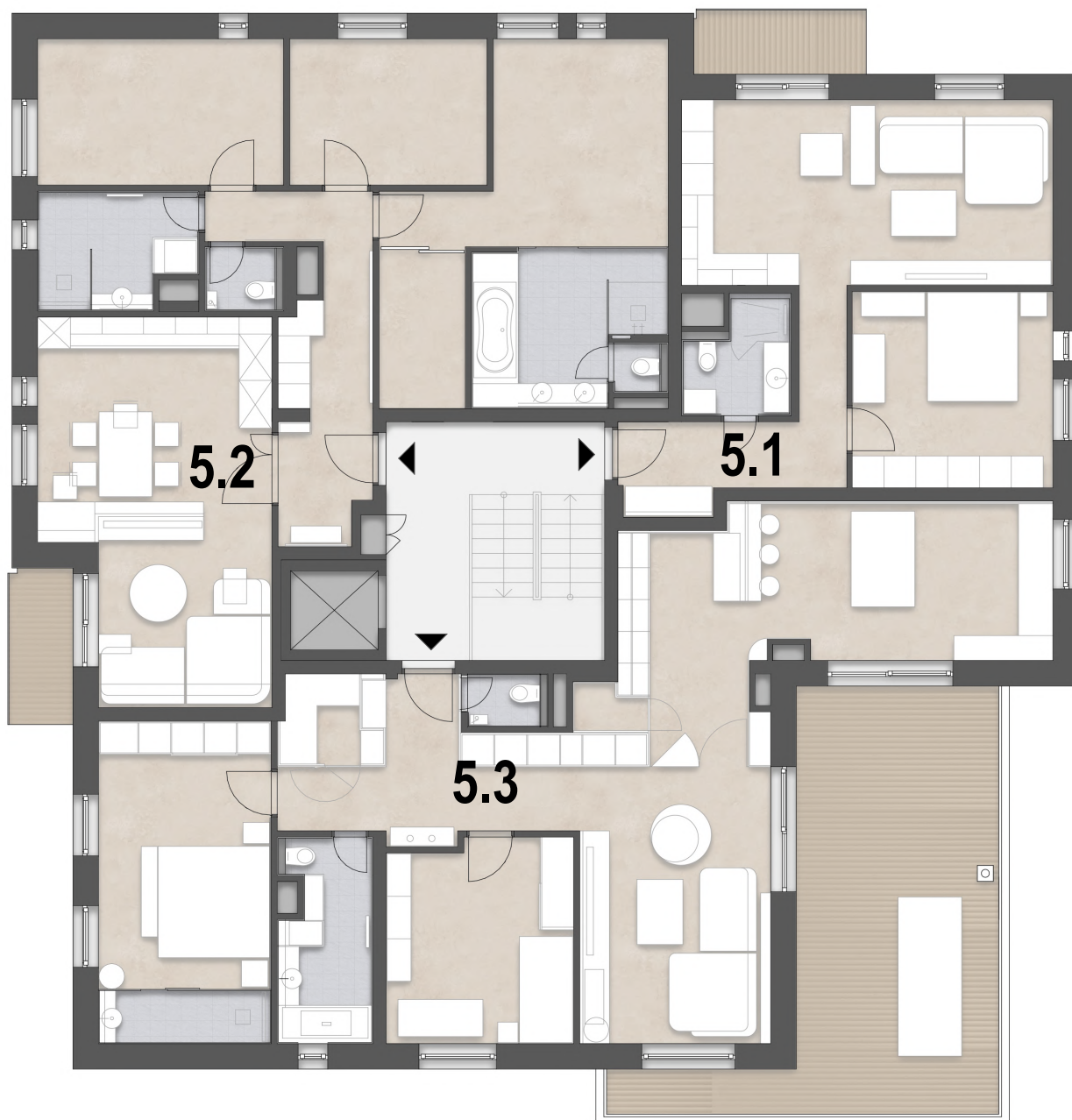
1,78 m²

PREDAJNÁ PLOCHA BYTU (BYT + EXTERIÉR)

60,60 m²



Pôdorys 5.nadzemného podlažia



5.1 - 2-IZBOVÝ BYT

PODLAŽIE

5

POČET IZIEB

2

PLOCHA BYTU

51,23 m²

5.1.01 - Predsieň a chodba

8,62 m²

5.1.02 - Kúpeľňa a WC

4,11 m²

5.1.03 - Izba

14,00 m²

5.1.04 - Obyvacia izba s kuchynským kútom

24,50 m²

EXTERIÉR

6,97 m²

5.1.05 - Balkón

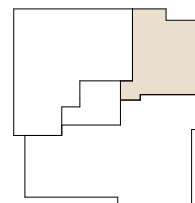
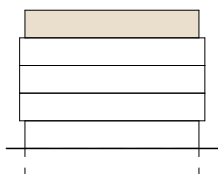
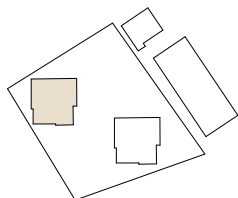
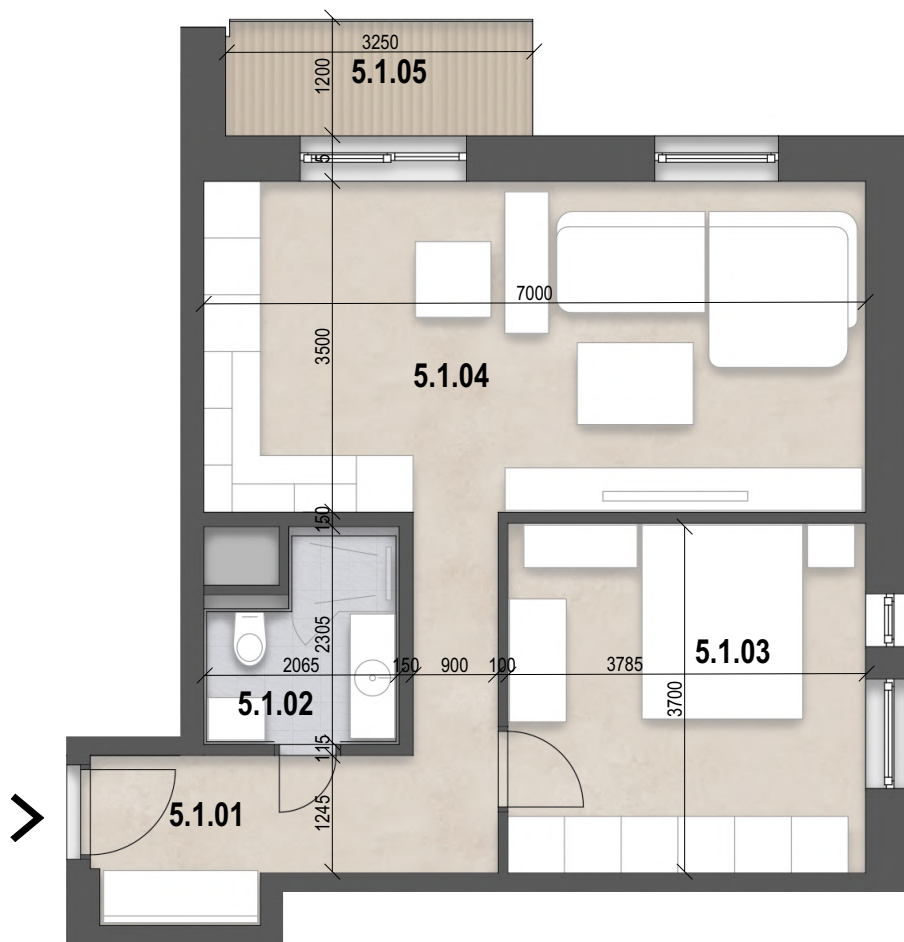
3,80 m²

01.1.06 - Kobka

3,17 m²

PREDAJNÁ PLOCHA BYTU (BYT + EXTERIÉR)

58,20 m²



5.2 - 4-IZBOVÝ BYT

PODLAŽIE

5

POČET IZIEB

4

PLOCHA BYTU

102,90 m²

5.2.01 - Predsieň	3,90 m ²
5.2.02 - Obývacia izba s kuchyňou	28,96 m ²
5.2.04 - Chodba	7,86 m ²
5.2.05 - WC	1,79 m ²
5.2.06 - Kúpeľňa	6,27 m ²
5.2.07 - Izba	12,81 m ²
5.2.08 - Izba	10,27 m ²
5.2.09 - Spálňa	15,22 m ²
5.2.10 - Kúpeľňa	10,85 m ²
5.2.11 - Šatník	4,97 m ²

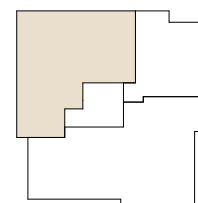
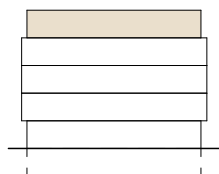
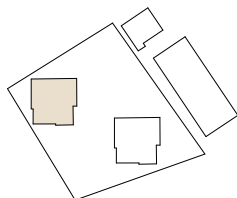
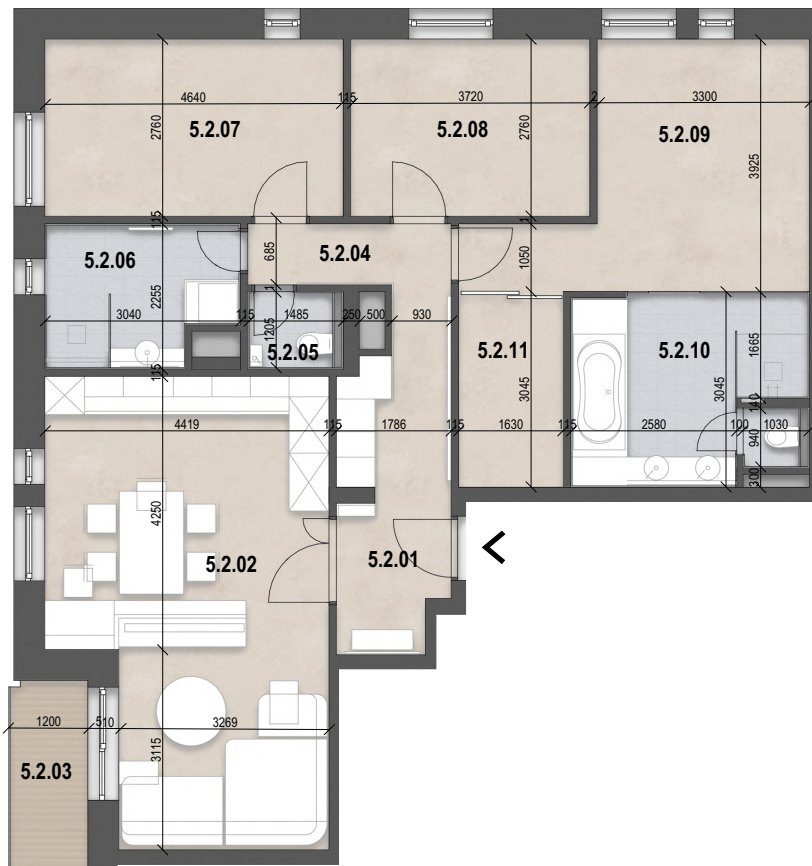
EXTERIÉR

6,66 m²

5.2.03 - Balkón	3,49 m ²
01.1.07 - Kobka	3,17 m ²

PREDAJNÁ PLOCHA BYTU (BYT + EXTERIÉR)

109,56 m²



5.3 - 4-IZBOVÝ BYT

PODLAŽIE

5

POČET IZIEB

4

PLOCHA BYTU

104,52 m²

5.3.01 - Predsieň s chodbou a šatníkom

14,67 m²

5.3.02 - WC

1,51 m²

5.3.03 - Spálňa s toaletou

19,79 m²

5.3.04 - Kúpeľňa

6,60 m²

5.3.05 - Izba

13,33 m²

5.3.06 - Obyvacia izba

25,44 m²

5.3.07 - Obytná kuchyňa s jedálňou

23,18 m²

EXTERIÉR

36,83 m²

5.3.08 - Terasa

33,43 m²

01.1.09 - Kobka

3,40 m²

PREDAJNÁ PLOCHA BYTU (BYT + EXTERIÉR)

141,35 m²

